

## Repair instruction

**Description:** SC234/200 Seal automatic vent

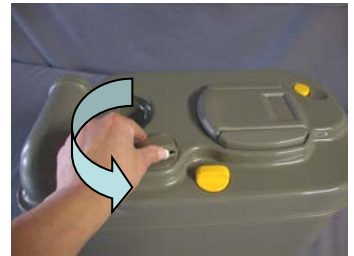
**Part number:** 21528

Look for Service Centres, Point of Sale addresses and other information on: [www.thetford-europe.com](http://www.thetford-europe.com)

<b>Version:</b>	1
<b>Date:</b>	April 2010
<b>Tools required:</b>	-

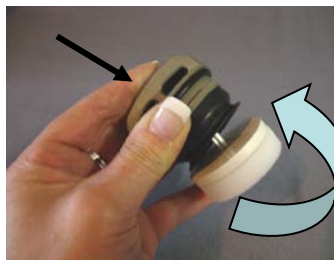
**A**

Turn automatic vent and take it out completely.



**B**

Press upper automatic vent in, so that the foam can be taken off. This can be done by turning.



Now take both seals off.



**C**

Follow steps in reverse for assembling the new seals.

## Repair instruction

**Description:** SC200 Lock waterfill door

**Part number:** 23790-57/58/80/84

Look for Service Centres, Point of Sale addresses and other information on: [www.thetford-europe.com](http://www.thetford-europe.com)

<b>Version:</b>	1
<b>Date:</b>	April 2010
<b>Tools required:</b>	-

**A**

Open the waterfill door.



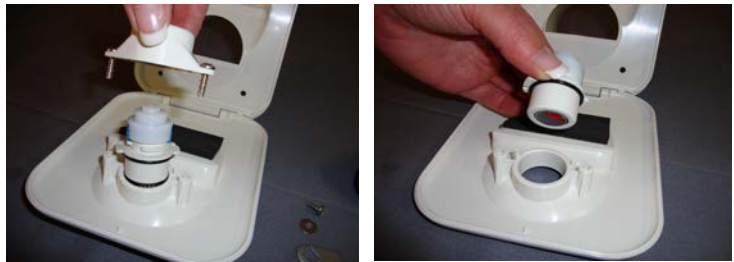
**B**

Take the screw on the pawl out. After this, take two screws out of the housing.



**C**

Take housing off and complete lock out.



**D**

For assembling new lock, follow steps in reverse.

## Repair instruction

**Description:** SC200CW Pump retainer

**Part number:** 23845

Look for Service Centres, Point of Sale addresses and other information on: [www.thetford-europe.com](http://www.thetford-europe.com)

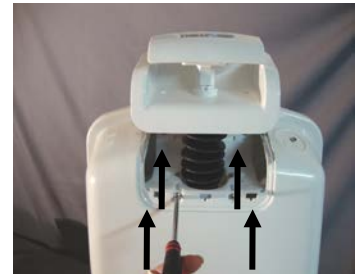
<b>Version:</b>	1
<b>Date:</b>	April 2010
<b>Tools required:</b>	Flat screwdriver



**A**

Pull handle up and take the two screws out.

After this, take the four screws out.



**B**

To allow the kit becomes loose, use a flat screwdriver. Note: Place a towel between the watertank and flush mechanism to avoid damages.



C

Make the vacuum breaker loose from the pump by pressing the clip. Take now complete pump out of the watertank.



D

Remove the tube from the pump.



E

Press pump retainer loose from the pump, is connected on three points.



Place new pump retainer and press it back onto the pump.



F

For assembling the complete pump back into the watertank, follow the steps in reverse.

## Repair instruction

**Description:** SC200 Saddle bracket

**Part number:** 23848

Look for Service Centres, Point of Sale addresses and other information on: [www.thetford-europe.com](http://www.thetford-europe.com)

<b>Version:</b>	1
<b>Date:</b>	April 2010
<b>Tools required:</b>	Cross headed screwdriver

**A**

Remove waste holding tank out of the toilet.



**B**

Take 3 screws out of the saddle bracket.

For location screws see second photo. Note: photo is upside down.



**C**

Push retaining ring, which is holding the bracket and shaft together loose. Shaft needs to be separated from bracket.



## Repair instruction

**Description:** SC200/400 Tank Lock clip

**Part number:** 2384978/5180116

Look for Service Centres, Point of Sale addresses and other information on: [www.thetford-europe.com](http://www.thetford-europe.com)

<b>Version:</b>	1
<b>Date:</b>	April 2010
<b>Tools required:</b>	Flat screwdriver

**A**

Turn the waste-holding tank upside down, place flat screwdriver under clip and lift it up gently.



**B**

Take complete clip out and press new lock clip in.





D

Take screw out where the link is connected with the handle, and take complete handle with shaft out (this needs to be done inside the vehicle).



Handle can now be disconnected from the link.



E

Place new saddle bracket from the inside so the shaft can be connected to the handle again.



F

Place black seal and connect link to the handle. Now place handle back in its position.



G

Place screw back into handle, following three screws in saddle bracket.



## Repair instruction

**Description:** C2 C3 C4 C200 Automatic vent  
**Part number:** 23722-74  
**Look for Service Centers, Point of Sale addresses and other information on:** [www.thetford-europe.com](http://www.thetford-europe.com)

<b>Version:</b>	V2
<b>Date:</b>	13/07/2006
<b>Tools required:</b>	-

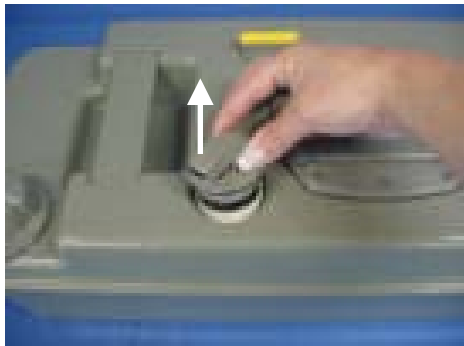
**A**

Holding tank  
C2/C3/C4/C200



**B**

Turn the automatic vent to the left and take it out.



**C**

Place new automatic vent in the waste tank and turn it to the right to lock it in the waste tank.

