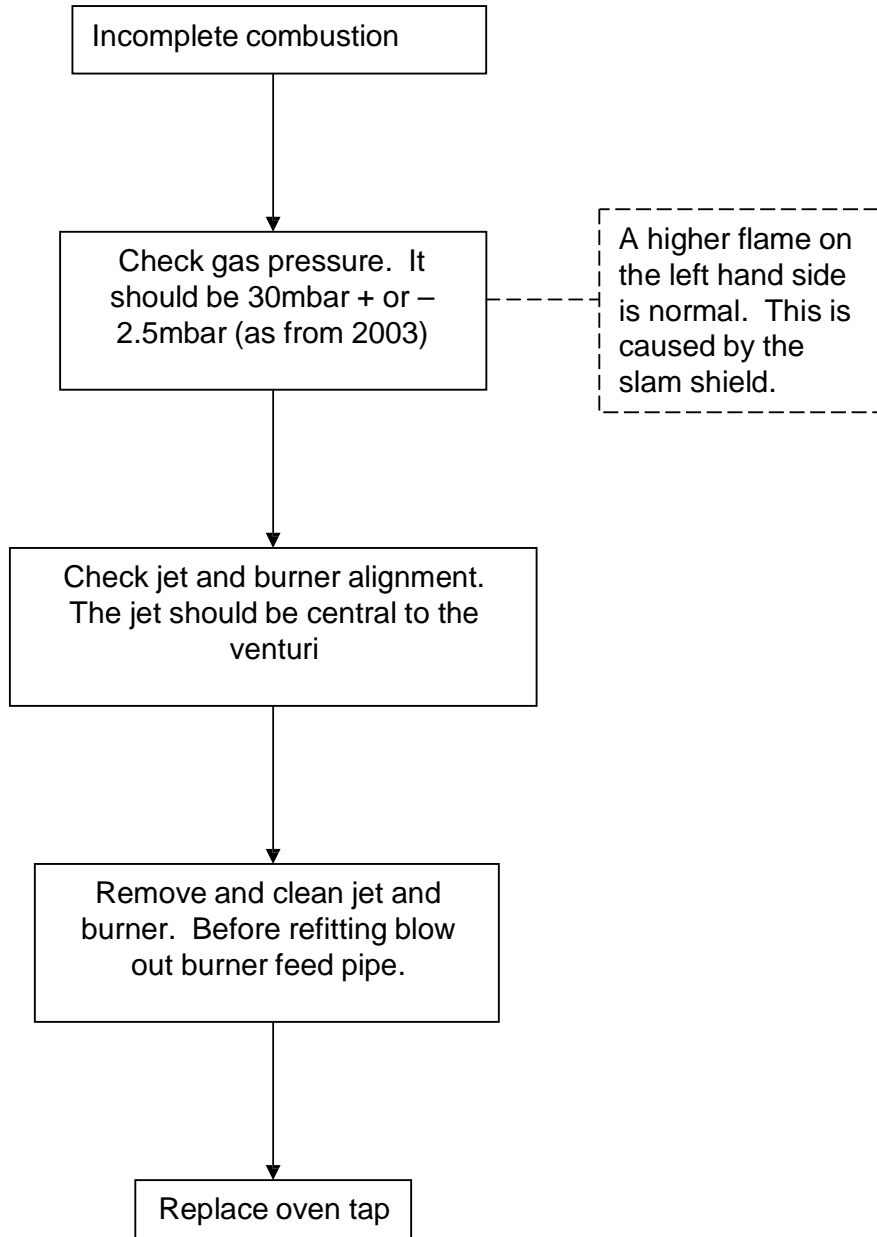
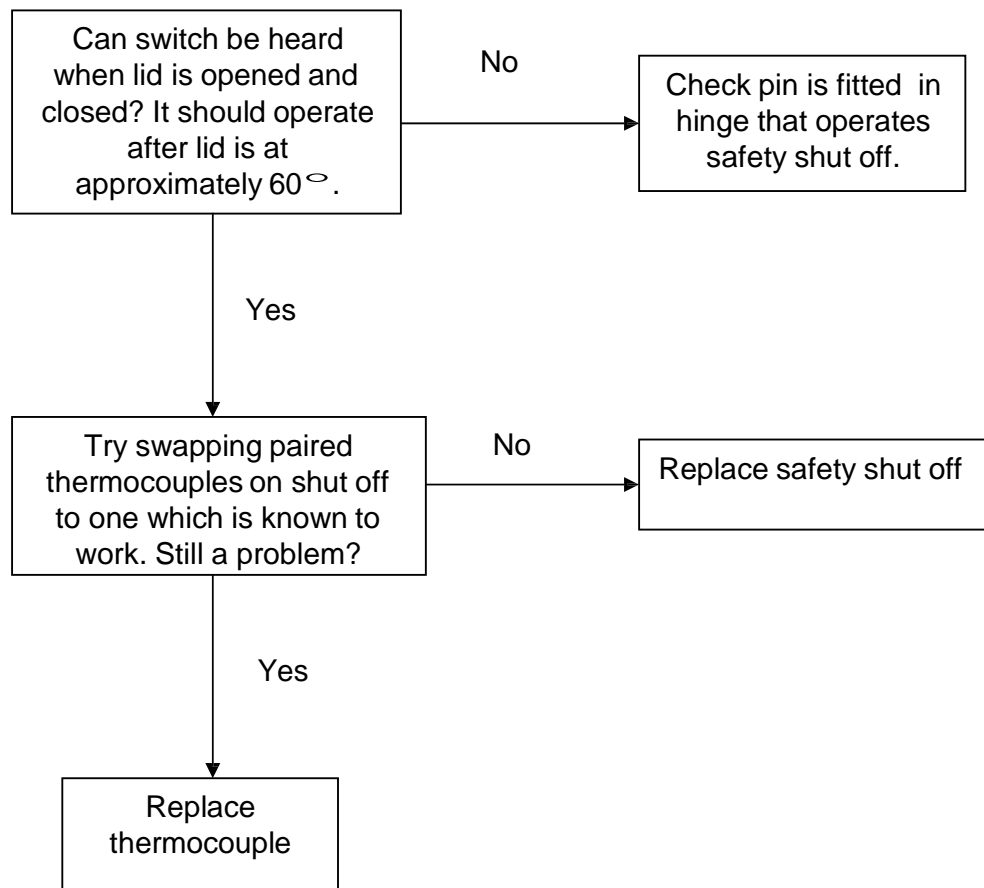


## Burner Has Yellow Flame



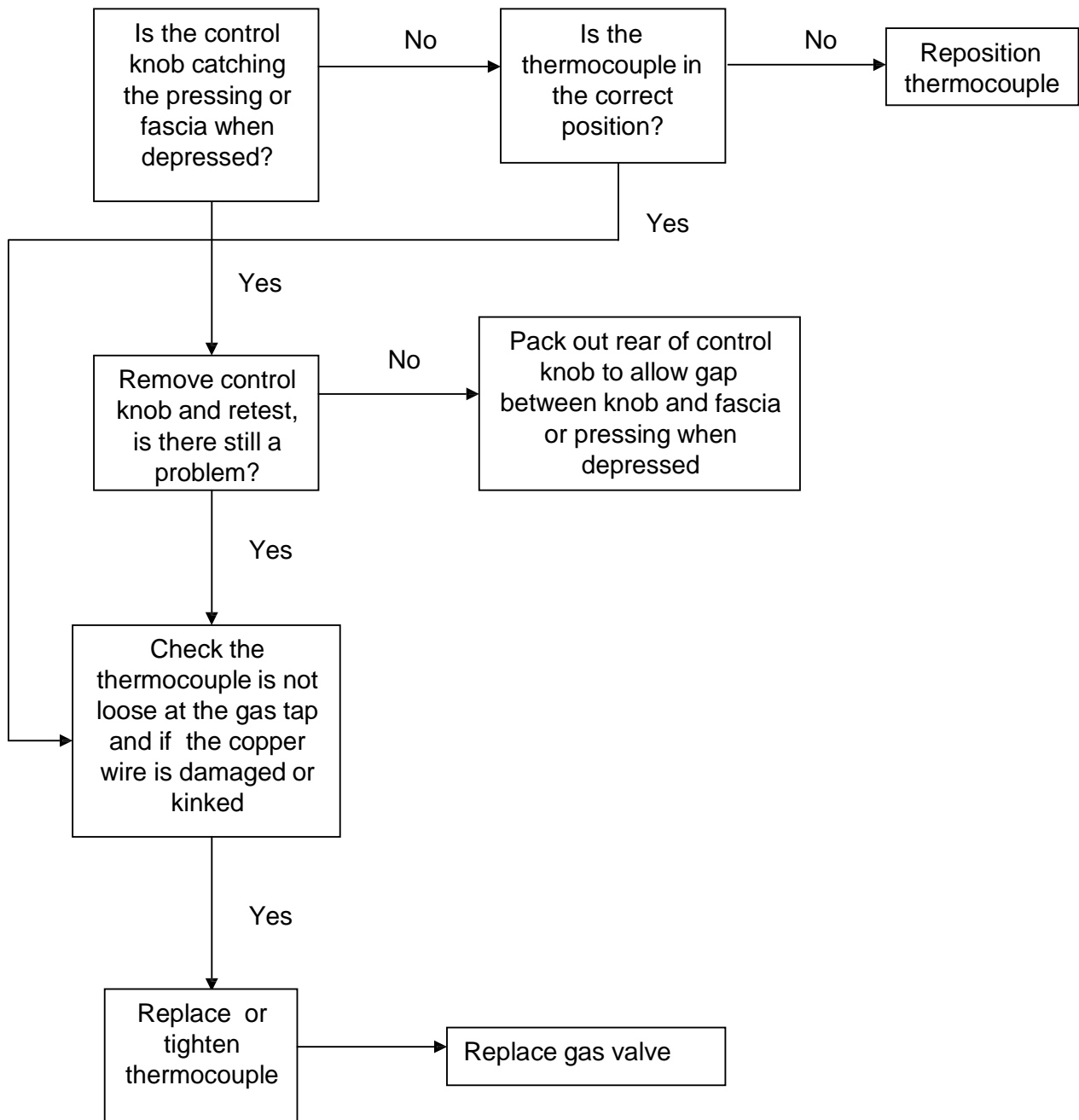


## Burner On Hob Will Not Stay Lit - With Gas Shut Off

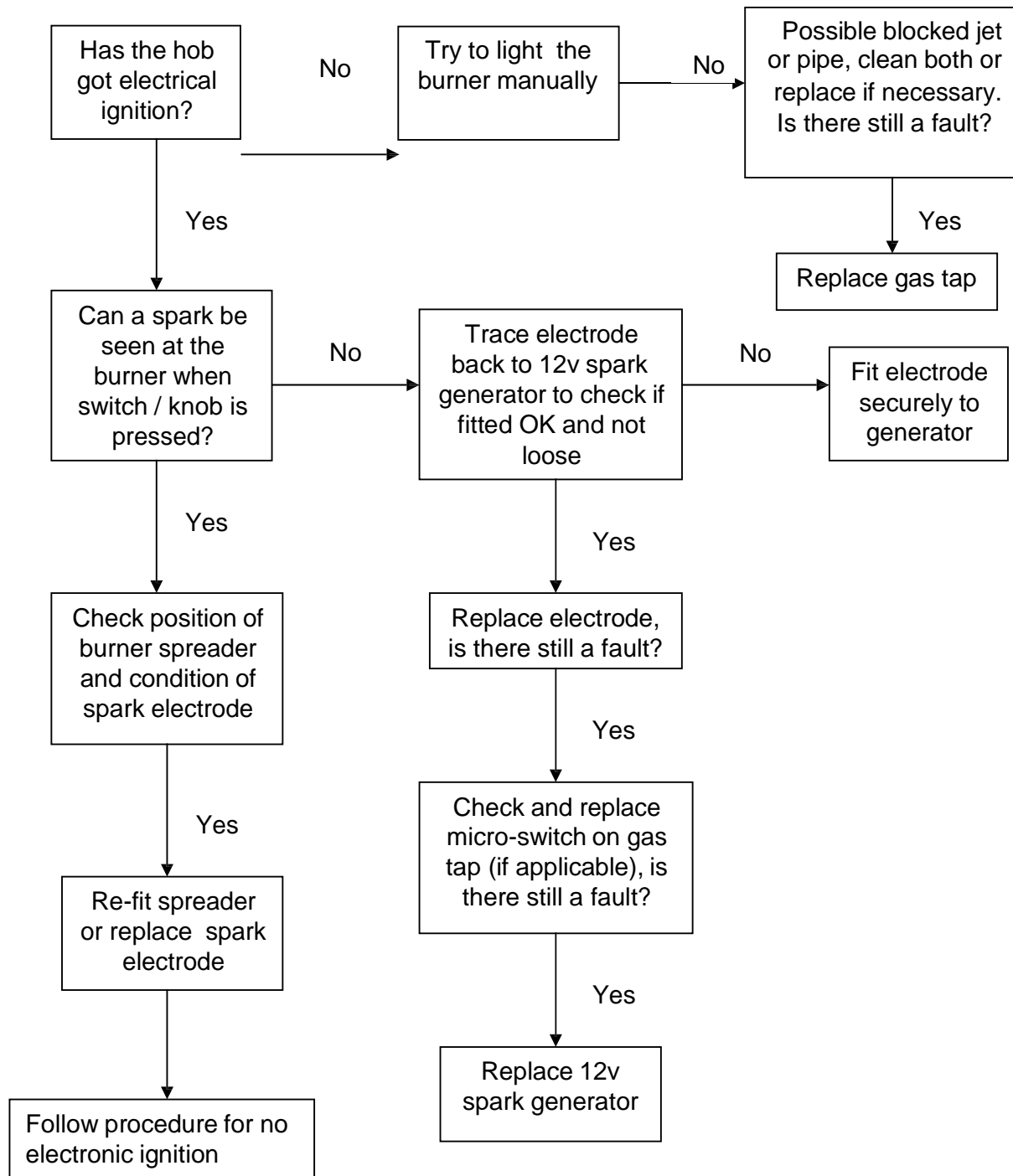




## Burner Will Not Stay Alight On Grill Or Oven And Hobs - Without Gas Shut Off

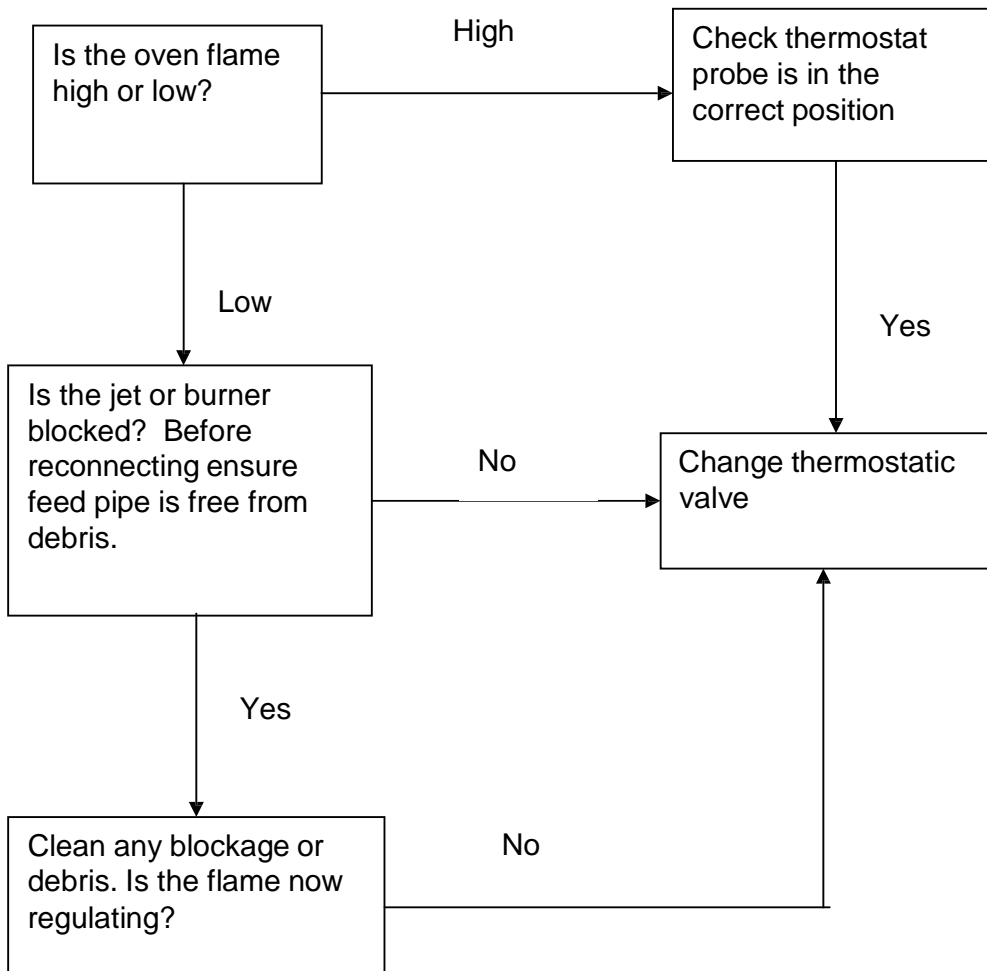


## Gas To Hob But Burner Will Not Light



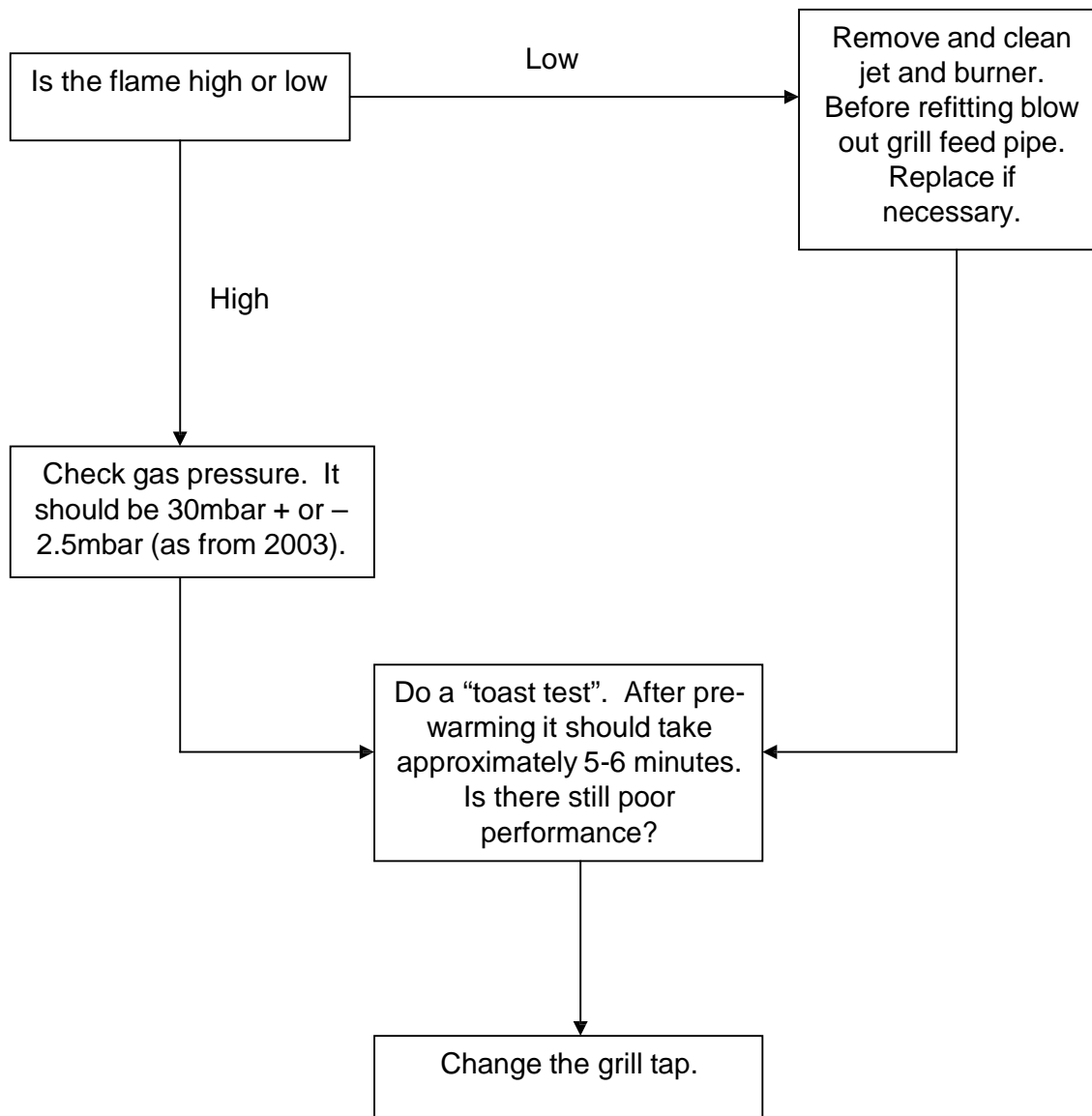
## Oven Flame Will Not Regulate

Light the oven and run on full power for 5 minutes then turn down the thermostat to the lowest setting. If the flame remains the same there is a fault.



## Poor Performance On Grill

Please see "Radiant Grill Burner" fact sheet for correct flame 3 pattern. As of 2003 the grill burner has changed and there is only a small flame in the centre but this does not affect the performance.



## Information Circular RADIANT GRILL BURNER

With the forthcoming implementation, in September 2003, of the new European Standard :-  
**EN1949 – Gas Installations in Leisure Accommodation Vehicles**

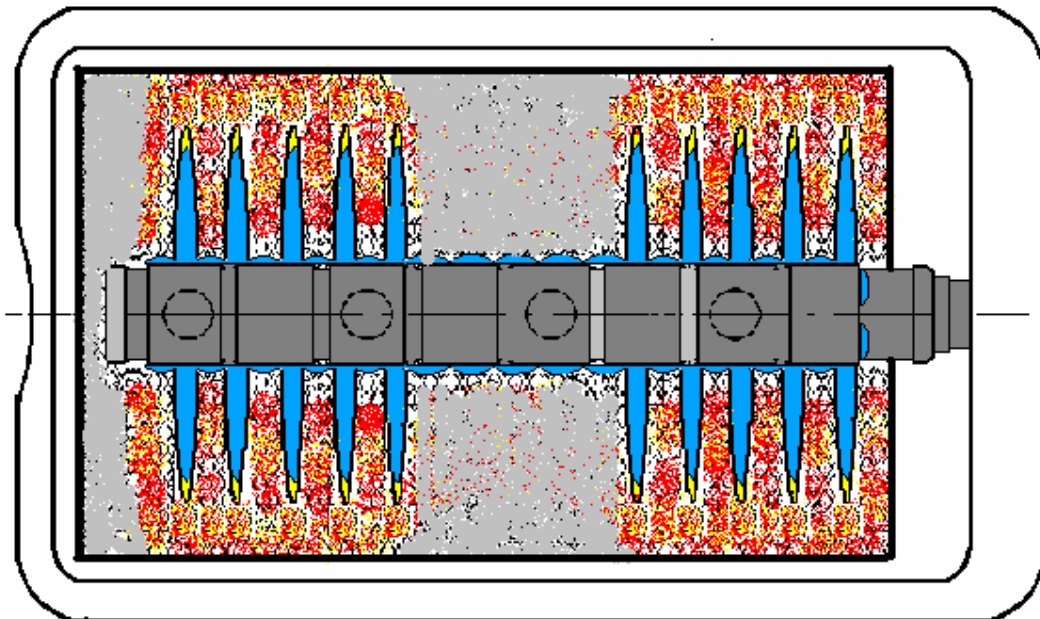
we have introduced changes to our Radiant Grill Burner. All products having a grill, will in the near future be manufactured with:-

1. New burner ports on Grill Tube.
2. New shape venturi tube
3. New injector bracket and holder.

The changes have been made following extensive trials in our in-house test facilities and ensure the grill performs efficiently at both the gas pressures listed in **EN30** and the new **EN1949**.

le	<b>EN30</b> <b>BUTANE (28 – 30mbar)</b> <b>PROPANE (37mbar)</b>	<b>EN1949</b> <b>BUTANE (30mbar)</b> <b>PROPANE (30mbar)</b>
----	---	--

The new grill can be distinguished from other grill units through visual inspection of its flame pattern, as shown in the diagram below.



## Poor Performance on Oven

Check gas pressure to appliance. It should be 30mbar + or - 2.5mbar with all appliances on. On older vehicles without fixed regulators gas pressures may be 37mbar for Propane or 28mbar for Butane. Australian appliances run on a lower pressure.

The oven on maximum for 15 minutes should achieve a temperature of approximately 240°C + or - 15°C at the centre shelf position.

